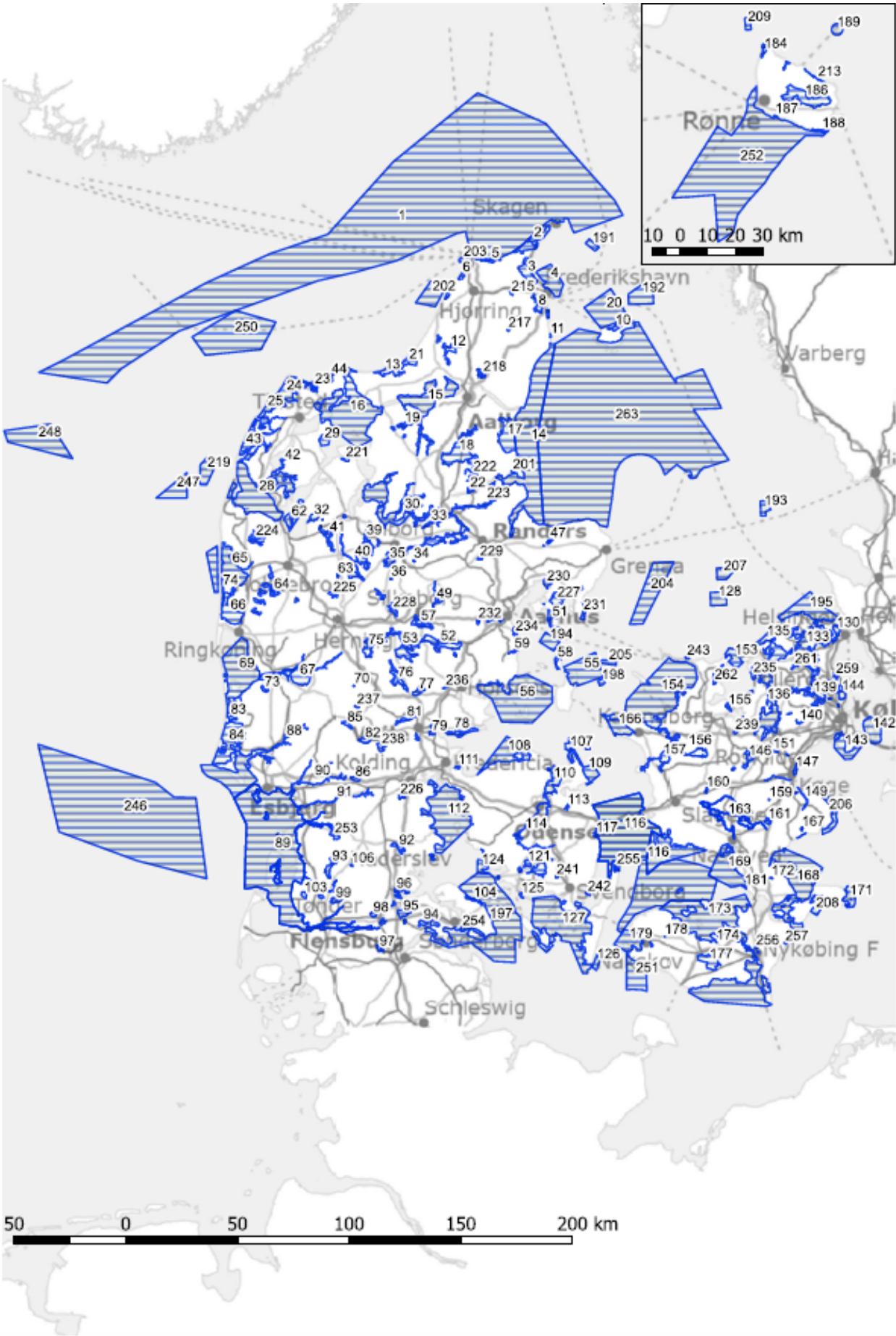


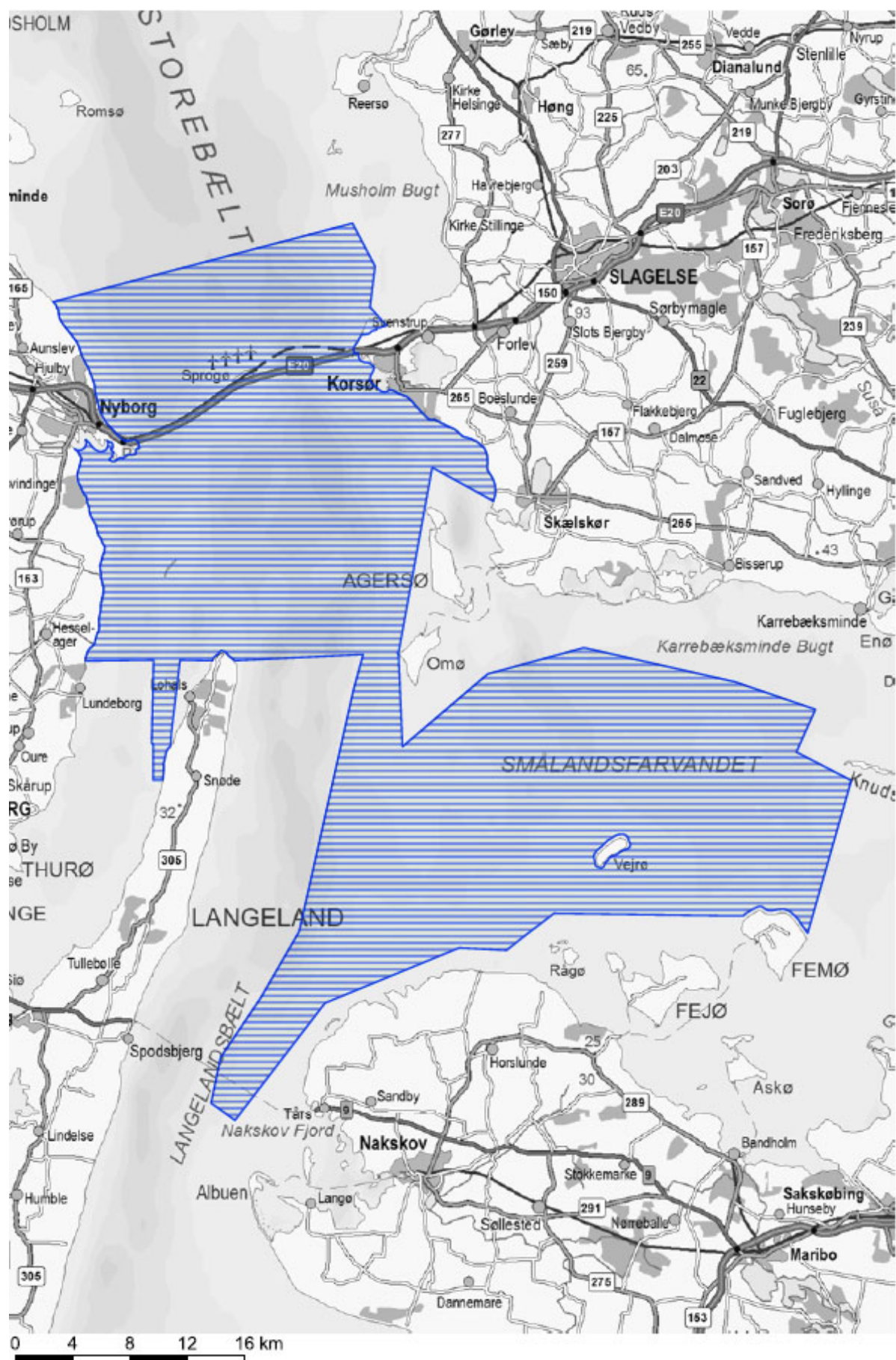
Oversigt over Internationale naturbeskyttelsesområder



**Internationalt naturbeskyttelsesområde N1  
Skagens Gren og Skagerrak**

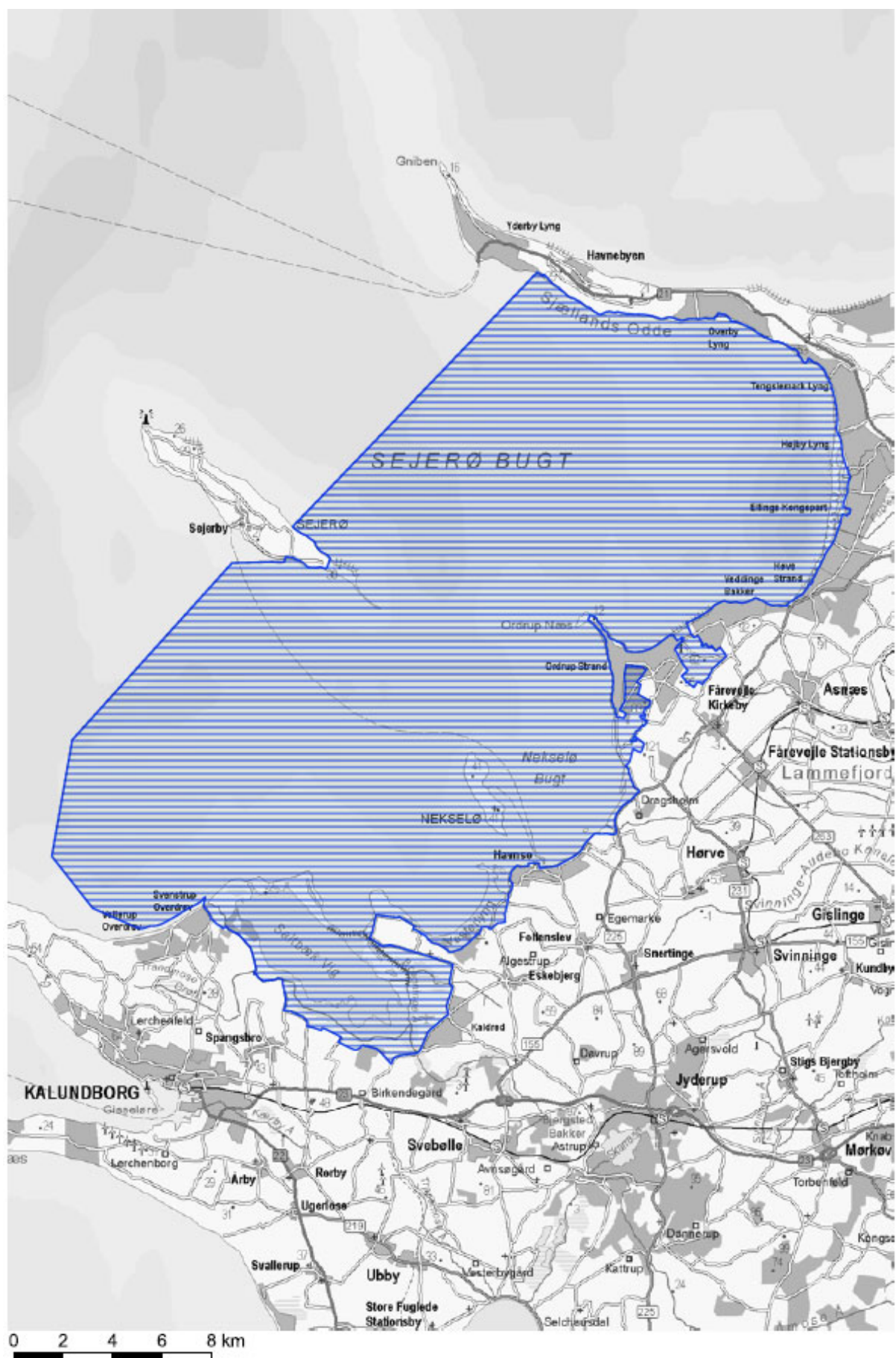


## Internationalt naturbeskyttelsesområde N116 Centrale Storebælt og Vresen

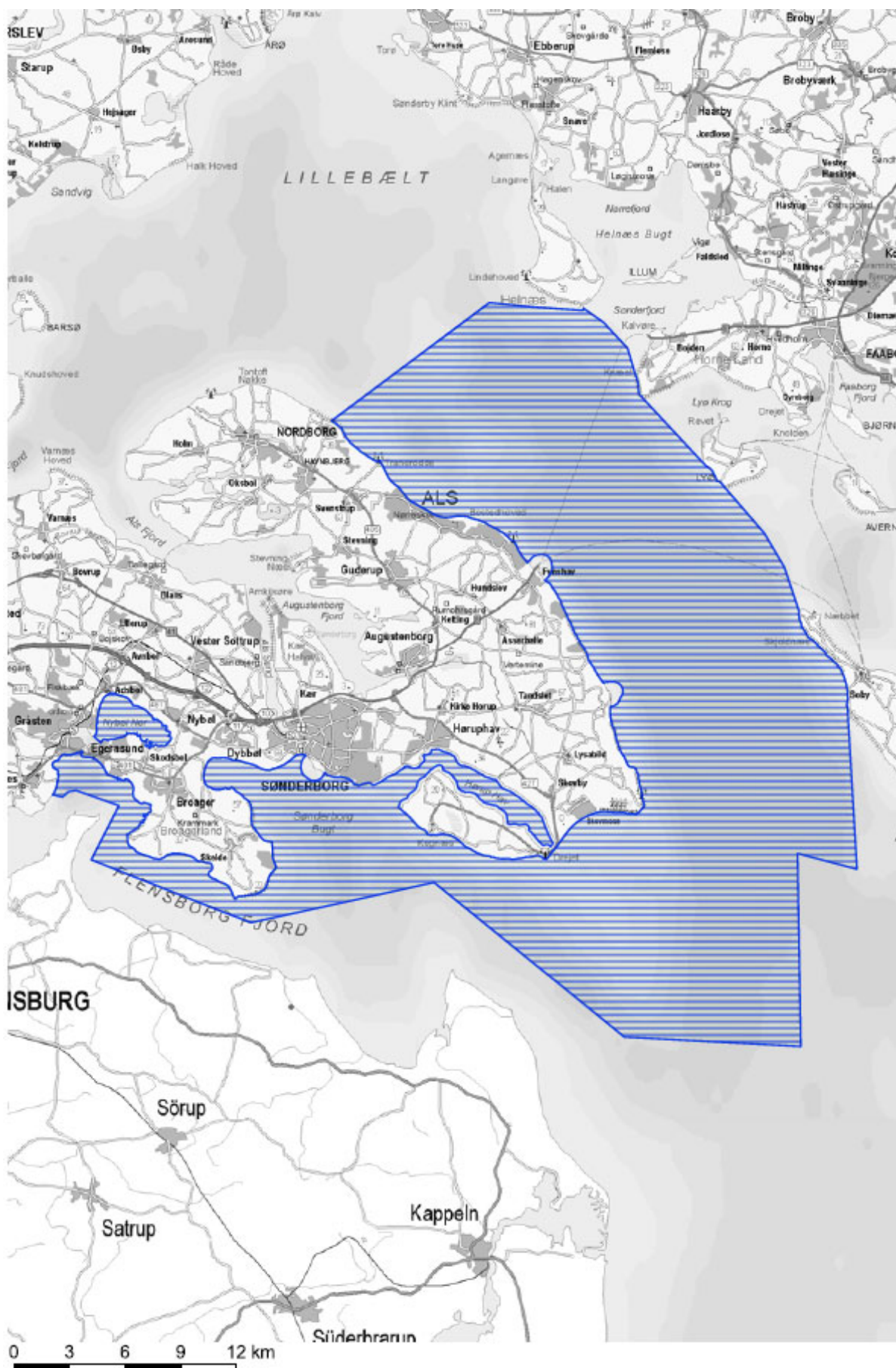




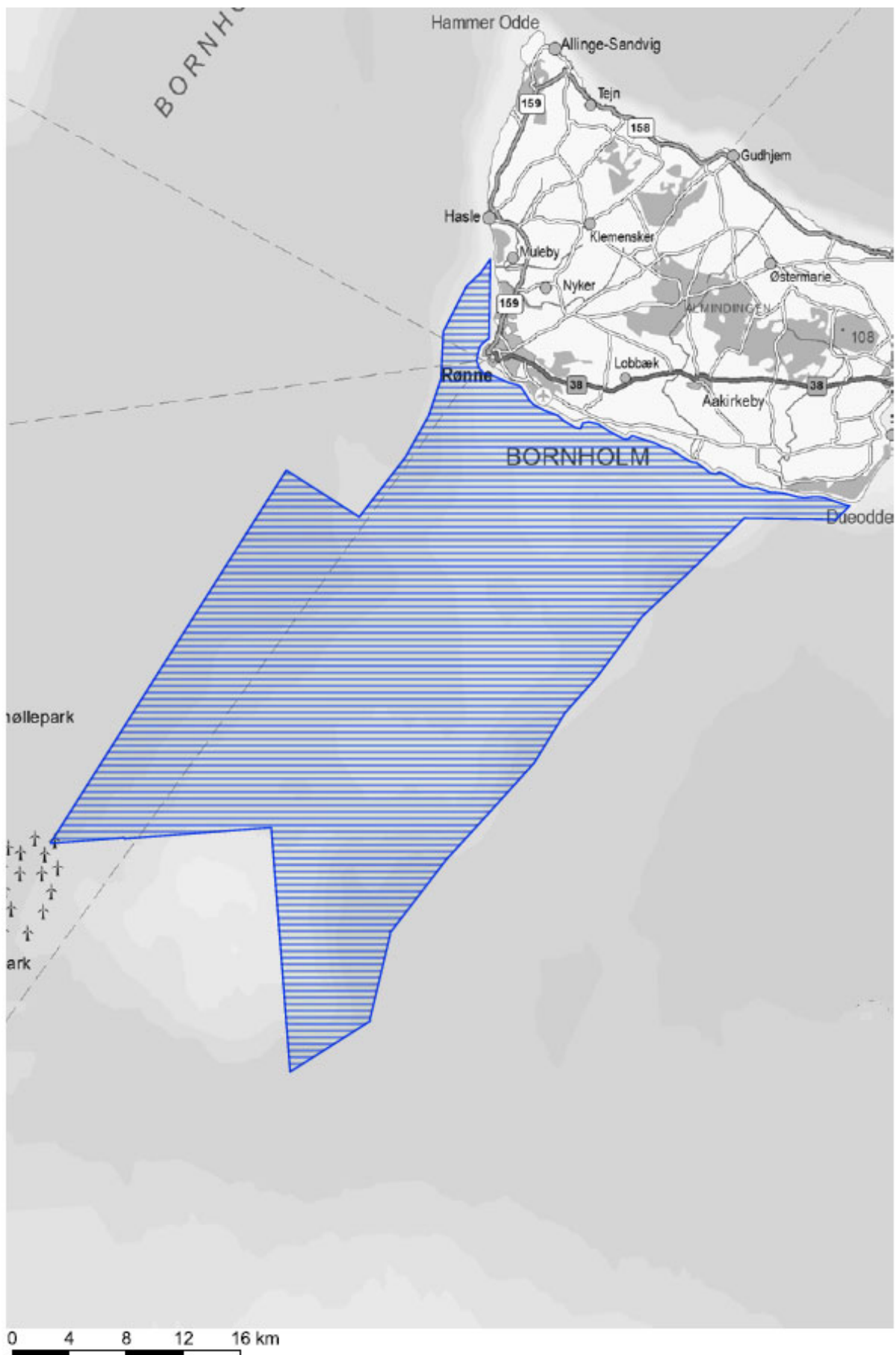
**Internationalt naturbeskyttelsesområde N154**  
**Sejerø Bugt, Saltbæk Vig, Bjergene, Diesebjerg og Bollinge Bakke**



## Internationalt naturbeskyttelsesområde N197 Flensborg Fjord, Bredgrund og farvandet omkring Als

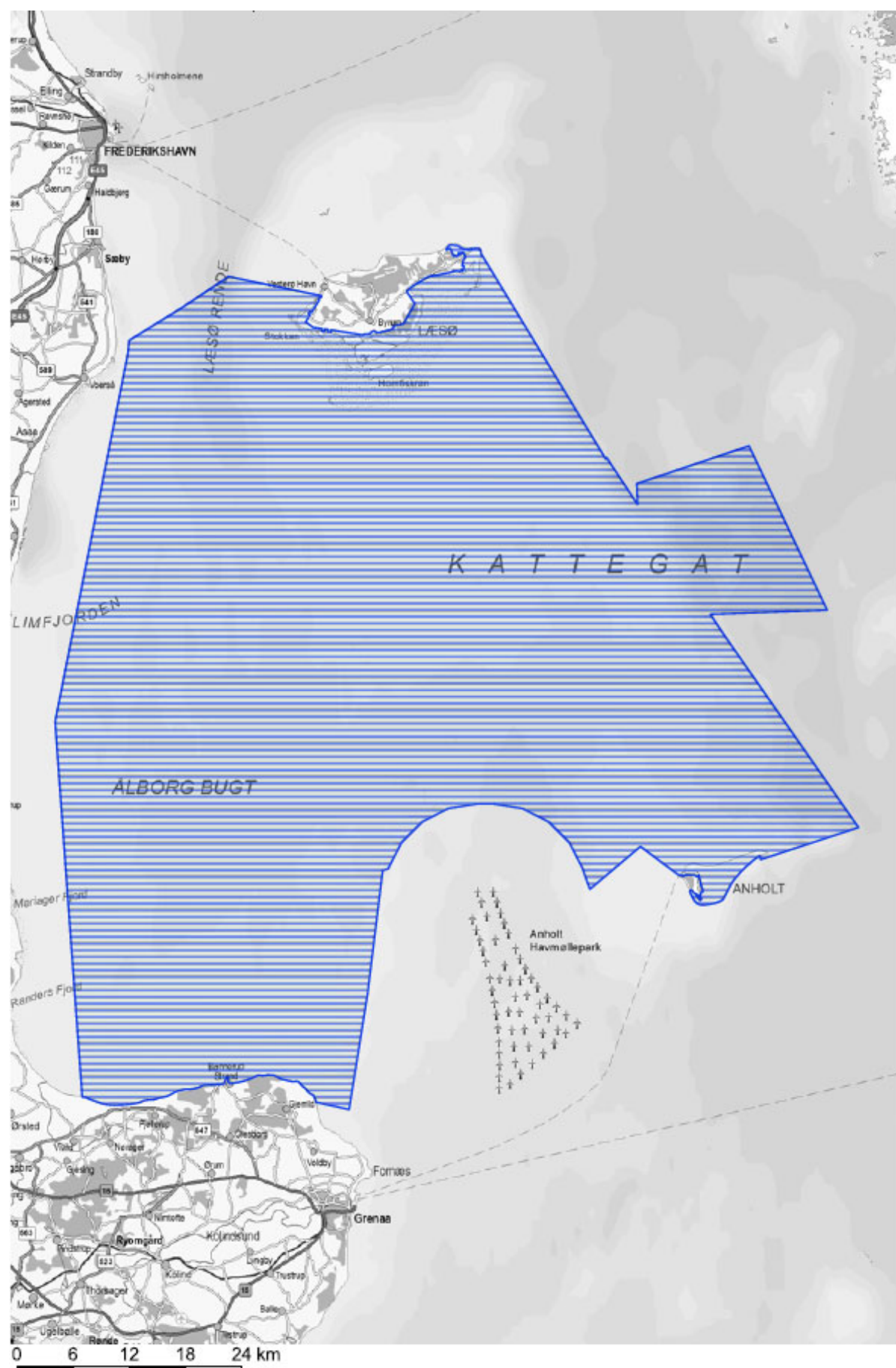


**Internationalt naturbeskyttelsesområde N252**  
**Adler Grund og Rønne Banke**

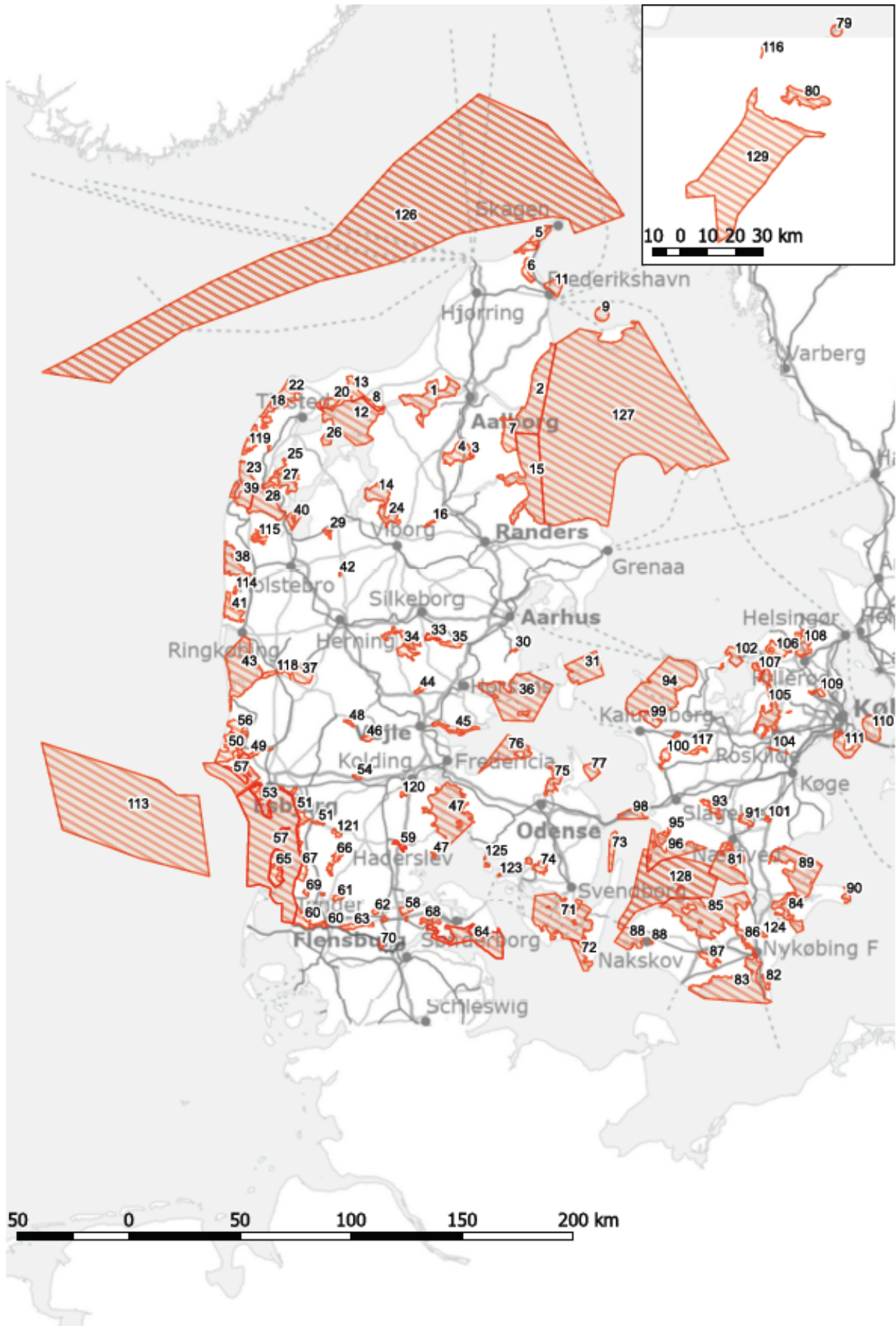




## Internationalt naturbeskyttelsesområde N263 Nordvestlige Kattegat



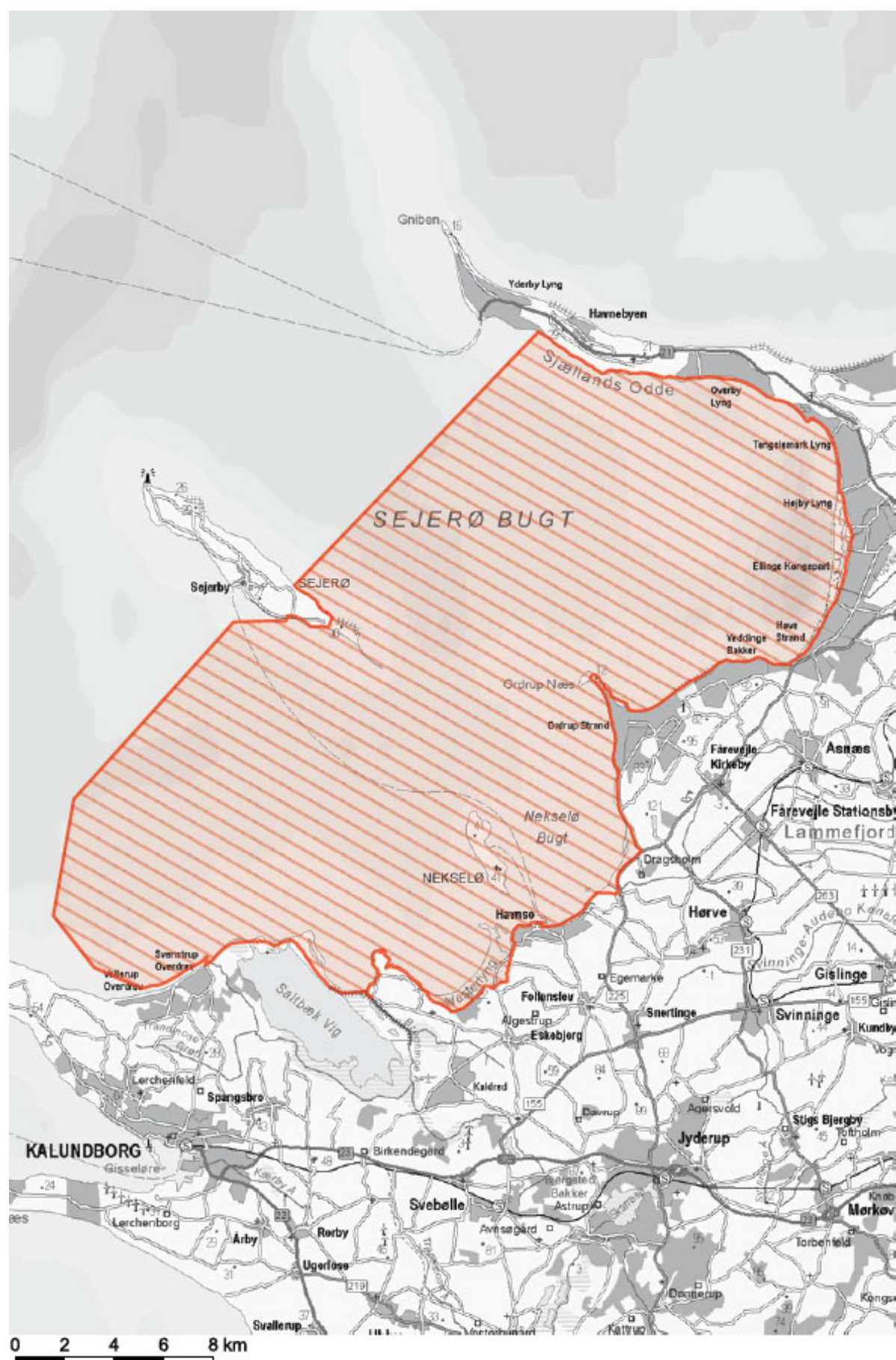
## Oversigt over EF-fuglebeskyttelsesområder





The map displays the Fensborg Fjord region. The red hatched area encompasses the islands of Nybel, Egersund, and Skodsbøl. Surrounding areas include Nordborg, Als, Sønderborg, and Kappeln. The map includes a scale bar from 0 to 8 km.

## EF-fuglebeskyttelsesområde F94 Sejerø Bugt og Nekselø





EF-fuglebeskyttelsesområde F126  
Skagerrak





This map illustrates the Kattegat region, highlighting the Læsø Rende (Læsø Sound) and the Alborg Bugt (Aalborg Bay). The Læsø Rende is marked with a red outline and diagonal hatching. The Alborg Bugt is labeled in the lower-left portion of the hatched area. The map includes major cities such as Frederikshavn, Grenaa, and Læsø. A scale bar at the bottom indicates distances from 0 to 24 km. The map also shows various smaller islands and coastal features, including the Limfjorden and the Anholt Havmøllepark.

[illegible]



**EF-fuglebeskyttelsesområde F129**  
**Rønne Banke**

